

**LN32**  
Horse leather,  
0.9-1.1 mm



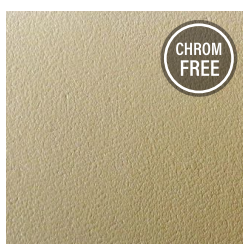
**LN02**  
Calflining cream,  
0.7-0.9 mm



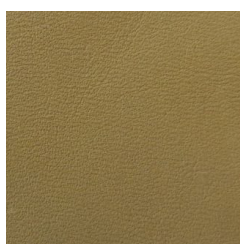
**LN45**  
Natura lining burro,  
1.0-1.1 mm



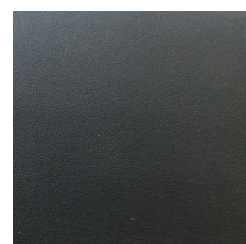
**LN26**  
Lamnappa naturel,  
0.7-0.9 mm



**LN22**  
Calflining camel,  
0.9-1.1 mm



**LN24**  
Calflining nero,  
0.7-0.9 mm



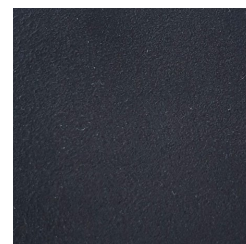
**LN18**  
Suetex beige,  
0.7 mm



**LN17**  
Suetex grey,  
0.7 mm



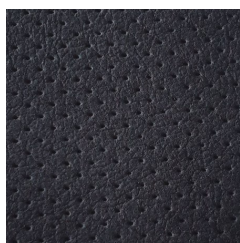
**LN19**  
Micro suetex  
black,  
0.6 mm



**LN33**  
ON STEAM  
perforated  
beige,  
0.8 mm



**LN34**  
ON STEAM  
perforated  
black,  
0.8 mm



**LN28**  
Natural fur  
off white



**LN30**  
Natural fur  
brown



**LN27**  
Natural fur  
black

